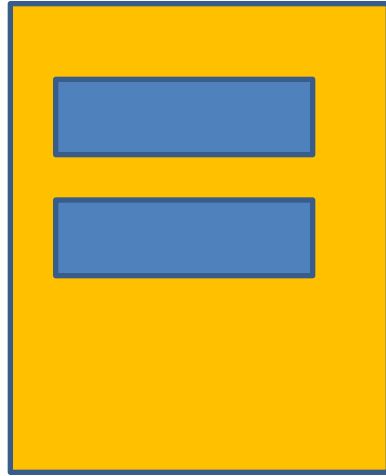
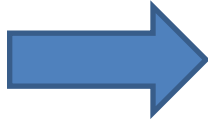


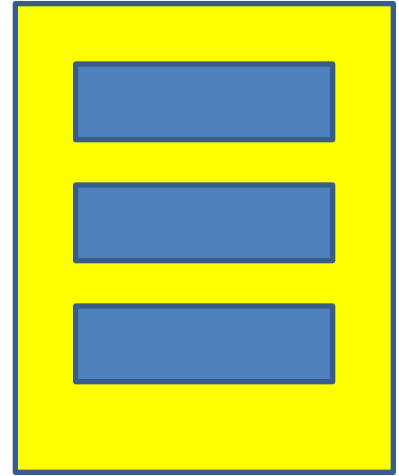
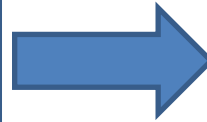
Employee

Step 1



Manager

Step 2



HR Department

Step 3

Configuring ABAP Webdynpro

1. Log on to Portal and edit a form
2. Right-click on ABAP Webdynpro 'more field help' → look at the pop up
3. Click on the links in the top right corner: 'Change Configuration' & 'Application Hierarchy'
4. Go to SE80 and click on 'Repository Information System' at the top of the screen'

Repository Info System: Find Web Dynpro Application



- MIME Repository
- Repository Browser
- Repository Information System
- Tag Browser
- Transport Organizer
- Test Repository

List Archive

- Objects
- Repository Information System
 - Development Coordination
 - Business Engineering
 - ABAP Dictionary
 - Program Library
 - Class Library
 - Web Dynpro
 - Web Dynpro Components
 - Web Dynpro Applicat.
 - Web Dynpro Chips
 - Component Configurations
 - Application Configurations
 - BSP Library
 - Enterprise Services
 - Enhancements
 - Test Objects
 - Other Objects

Standard Selections

Web Dynpro Application	ASR_PROCESS_EXECU...	→
Web Dynpro Component		→
Short Description		→
Package		→
Application Component		→

Settings

Maximum no. of hits	200
---------------------	-----

Webdynpro Application: ASR_PROCESS_EXECUTE_FPM

Package: PAOC_ASR_WD_PROCESS_EXECUTE

- Double-click on the 5 step
- Click on the button [START CONFIGURATOR]
- Click on the button [DISPLAY]
- Click on the button [GOTO Component Configuration]
- Click on the button [DEEP COPY] (at the top of the screen)
- Click on the button [Change Affixes] – ZX ----- XX
- Click on the button [START DEEP COPY]
- Go back to SE80 and click on the refresh button. Find your copy and right-click > test

- In SE80 double-click on your copy
- Click on [Start Configurator] button
- Click on [Change]
- Click on [Go to Component Configuration]
- Go to page 274 of your book. Make one change at a time and save and then right-click > test in SE80
- In SE80 go to the menu bar: Webdynpro Administration > Test > Execute in Admin Mode....
- Right click on field > Settings for Current Configuration

NWBC

- Goto transaction PFCG
- Create a single role call 'ZXX_Process_Forms'
- Go to the menu tab & create a folder
- Click on the [Transaction] button and choose 'webdynpro application':
ASR_PROCESS_EXECUTE_FPM
- Write a description
- And choose your configuration
- Assign to your user & save
- Use transaction NWBC and select the correct role

Portal

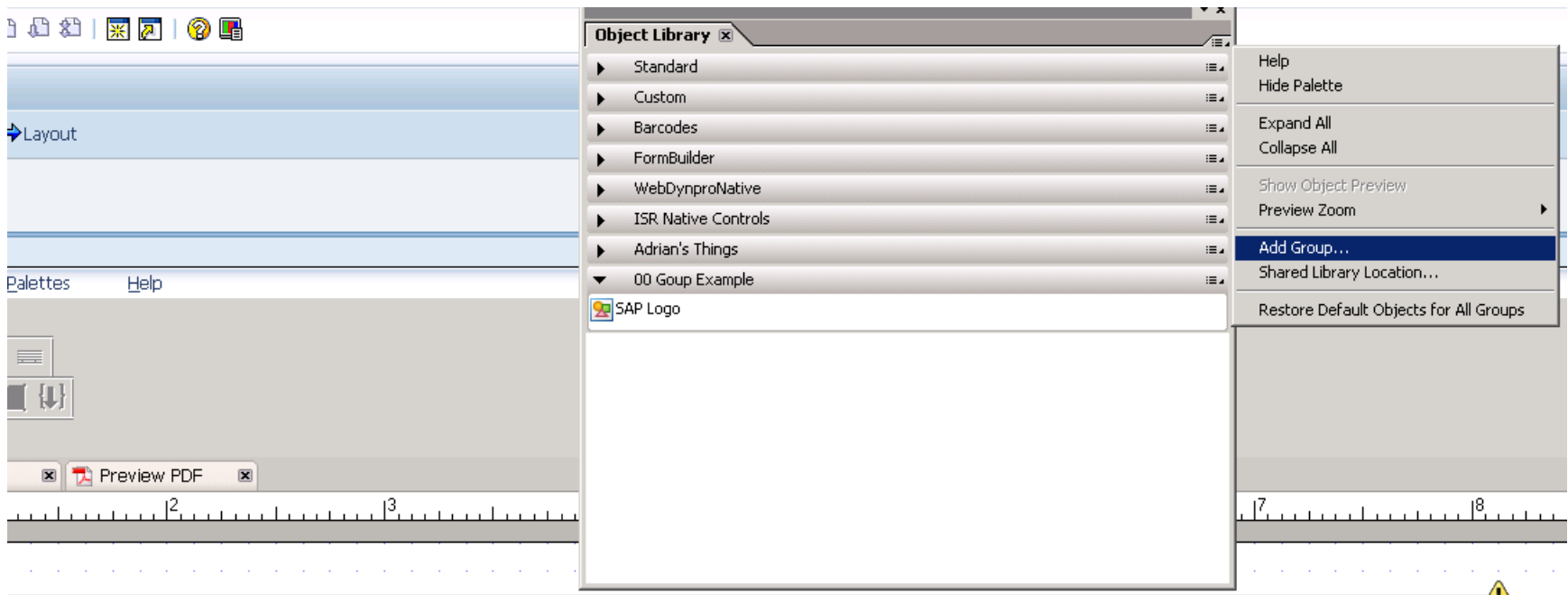
- Log on to the portal using:
- user: hr255.a-01
- Password: united
- Go to the 'Content Administration Tab'
- Open up the folder on the left: Portal Content > Adrin's Stuff > Double click on 'Start Processes for employees' iview
- Look at the 'Application' & 'Configuration Name' fields
- Finally click on the [Preview] button at the top of the screen
- Lunch 12.00 -13.00 GMT

Adding Tabs to a Palette

- Go to ADOBE DESIGNER (refer to Task 3 on page 162)
- Open the 'Object Library Palette' (Palettes > Object Library)
- Click on the top right of the palette and add group:

Continued:

Drag and drop objects from the form into your new 'tab', like the SAP logo below:



onus and Address Change (with Approval Step)

Ref.-No. |



Feedback Form

1. Minimise the remote desktop connection
 2. Click on [START] > Favorites > Online Evaluation
 3. Username: heathrow password: training
 4. Choose 'United Kingdom'
 5. Username: heathrow password: training
 6. United Kingdom
 7. Location: Virtual Course: HR280
- My email address is: adrian.miners@nicx.co.uk