

Data Model A: Talent Management

Data Model

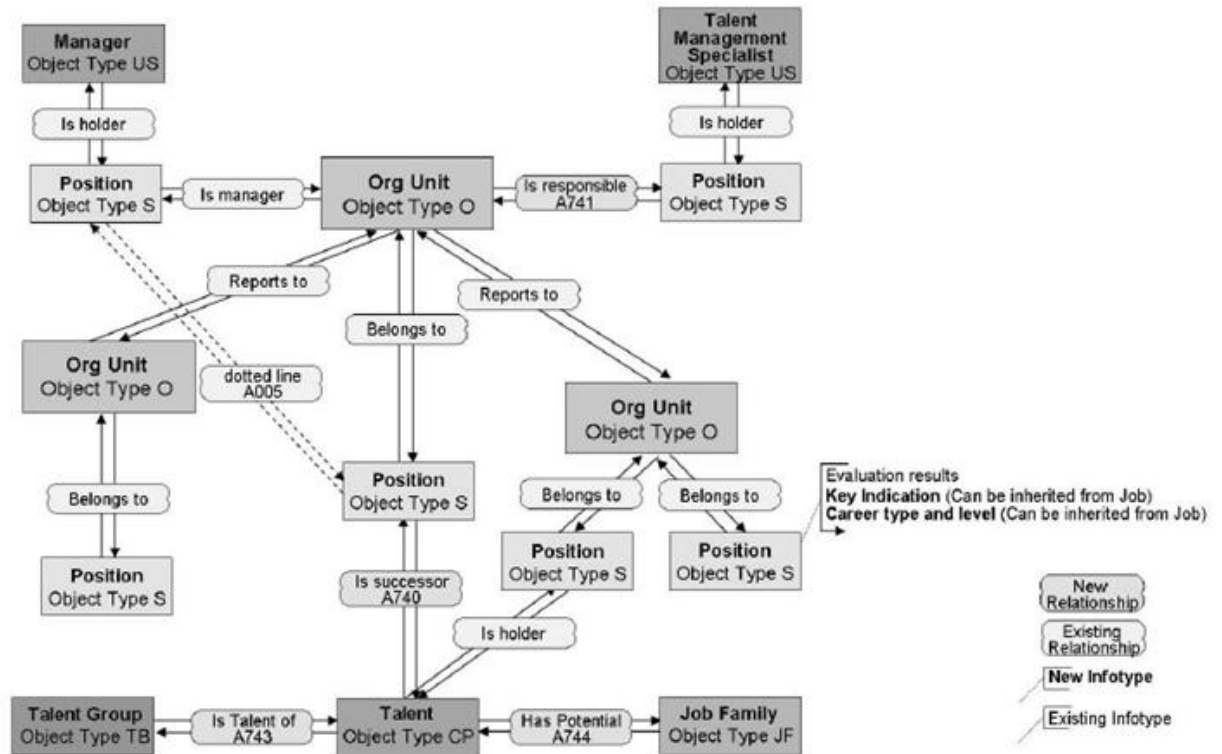


Figure 445: Data Model - Relationships

Data Model B: Talent Management

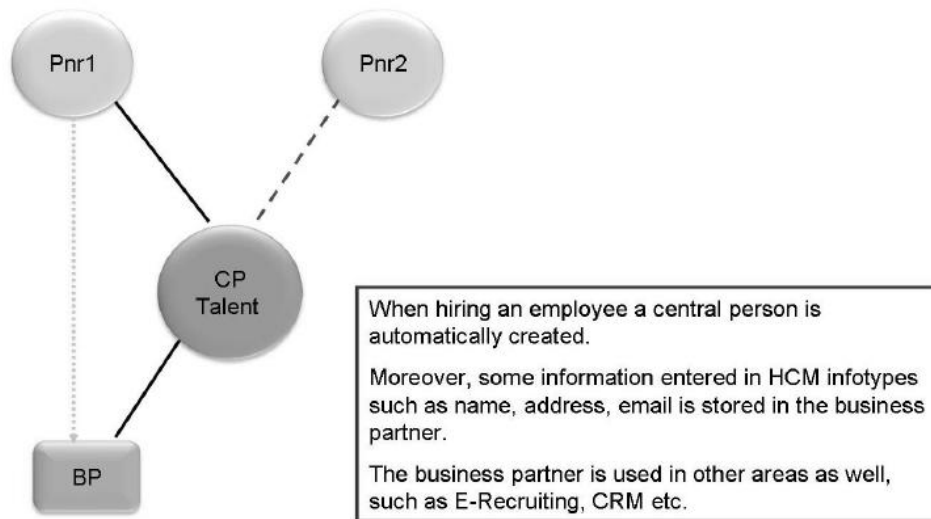


Figure 446: Talent (Central Person)



Data Model C: Job Architecture

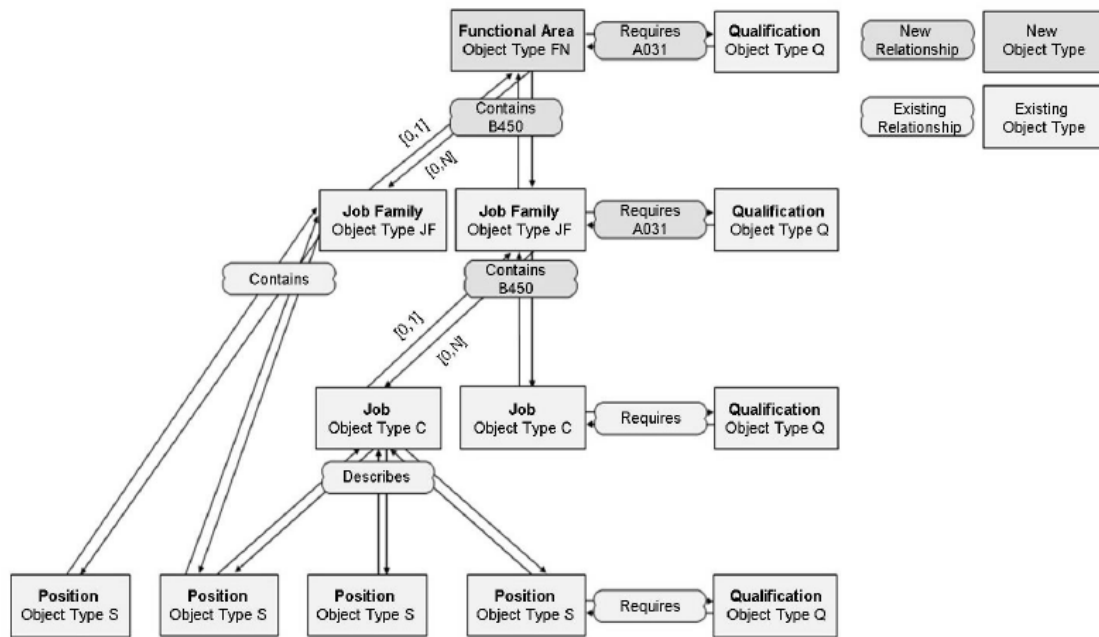


Figure 447: Data Model - Job Architecture

Data Model D: Infotypes in Talent Management

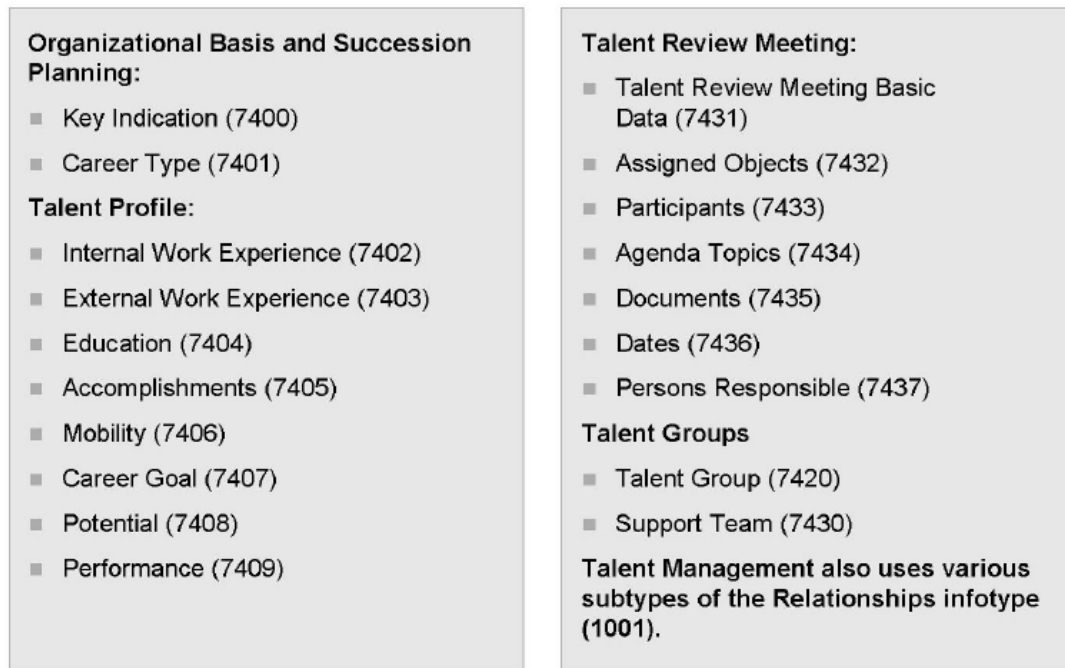


Figure 448: Infotypes used in Talent Management

Data Model E: Performance Management Infotypes & Relationships

Application component *Objective Setting and Appraisals (PA-PD-PM)*

New object types

- VA Appraisal Template
- VB Criteria Group
- VC Criterion
- VJ Goals

New infotypes:

- 5020 Category Assignment
- 5021 Layout Definition
- 5022 Column / Cell Definition
- 5023 Column Access
- 5024 Role Assignment
- 5025 Processing
- 5026 Statusflow

New relationships, for example:

■ 605	Is element of	Contains element
■ 606	Is reference attribute of	Refers to attributes of
■ 607	Is described by	Is descriptive object of

Figure 188: Concept

Category Group and *Category* do not have an object type of their own (they are table entries).

Data Model F: Infotypes for Talent Management

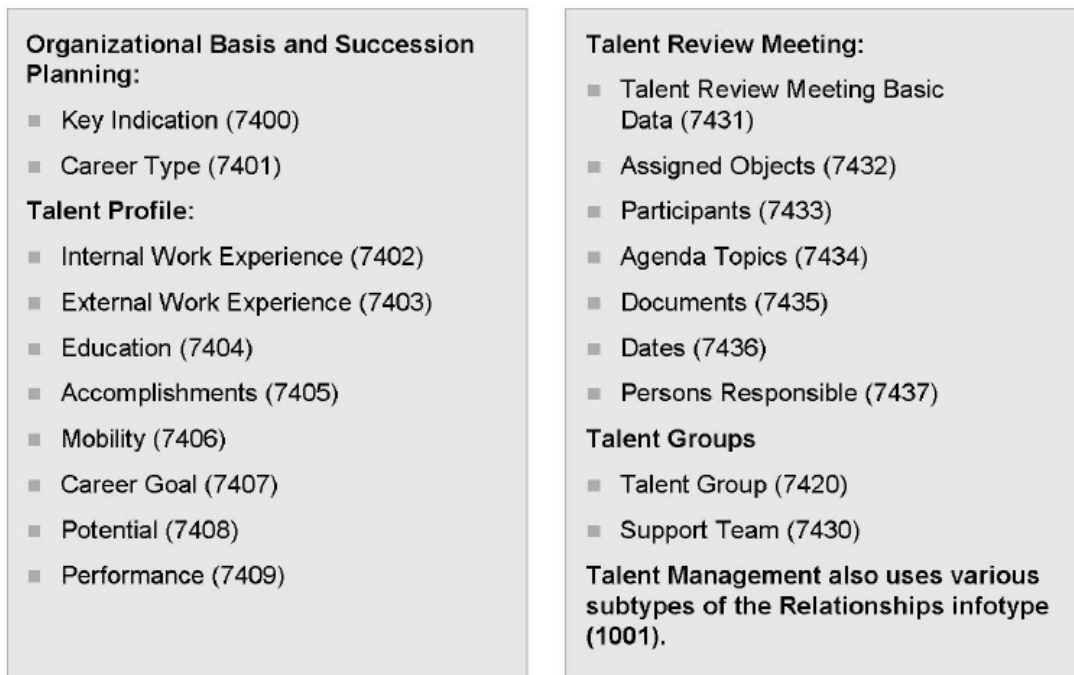


Figure 448: Infotypes used in Talent Management